



Super Hotel® Inn SENDAI KOKUBUNCHO

SUPER HOTEL INN SENDAI KOKUBUNCHO

URL : <http://www.superhotel.co.jp>
 mobile : <http://www.superhotel.co.jp/i>
 smartphone : <http://www.sh-mb.com/>

Large public bath

Sendaishiro-no-yu

Free healthy breakfast

Complimentary large public bath

Jozenji-Dori is the symbol of Sendai, the City of Trees.
 And at the heart, Super Hotel Inn Sendai Kokubuncho.
 The hotel is conveniently located just 1 minute from Kokubuncho and a night out on the town.

Photo courtesy of Tourist Exchange Division, Sendai City Government

Sendaishiro-no-yu (large public bath)

Free



(May not appear exactly as shown)

■ Bathing Times : [Women] 15:00–20:50
 [Men] 21:00–9:30 next morning

Healthy Breakfast

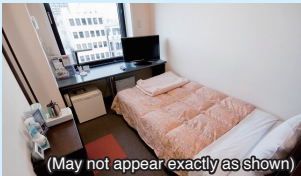
Free



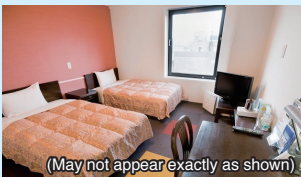
(May not appear exactly as shown)

We provide a nutritionally balanced and healthy breakfast for all guests. Start your day out right with a delicious boost.
 ■ Service time : 6:30–9:00

Guest Rooms



Single room
(up to 1 guest)



Double room
(up to 2 guests)



Twin room
(2–3 guests)

Standard Amenities and Facilities in Every Guest Room

[Room Facilities]

- 26-inch widescreen LCD TV
- Movies on demand (VOD, 150 titles)
- Complimentary high-speed Internet (LAN)
- Wi-Fi available building-wide
- Individual room A/C unit
- Refrigerator
- Electric kettle
- Hair dryer
- Air purifier with humidifier
- Unit bathroom
- Bidet
- Mobile charger

[Loanable Items, Other Items]

- Choice of 7 types of pillows
- Blankets
- Thermometer
- Light stand
- Trouser press
- Iron
- Sewing set
- Can opener
- Wine-bottle opener
- Nail clippers
- Cleaning service (fees apply)
- Rental PC (1000 yen per day)
- Folding chair
- Copy service (fees apply)
- Fax service (fees apply)
- Mobile charger
- Shaving razor (100 yen)
- Hair dryer

[Amenities]

- Toothbrush
- Bath towel
- Bath mat
- Face towel
- Two-in-one shampoo
- Body soap
- Pajamas (available on the 3rd floor)

[Hotel Facilities]

- Large public bath (alternating gender system)
- Coin-operated laundry *Free detergent
(Clothes washer: 100 yen per use, Clothes dryer: 100 yen per 30 minutes)
- Vending machines (soft drinks, alcoholic beverages)
- Computer corner (printer available)

Kokubuncho



Photo courtesy of Tourist Exchange Division, Sendai City Government

The commercial center of Sendai Castletown during the Edo Period, Kokubuncho became the Tohoku Region's premiere entertainment district from the Meiji Period onward.

● Approx. 1-minute walk from hotel
 For inquiries: +81 22-211-2822

Aoba Castle



Photo courtesy of Tourist Exchange Division, Sendai City Government

Also known as Sendai Castle, this structure was built by Masamune Date. Aoba Castle Park is often full of visitors come to see the cherry blossoms or the statue of Masamune Date on his horse.

● Approx. 10-minute drive from hotel
 For inquiries: +81 22-214-8259

Sendai Pageant of Starlight

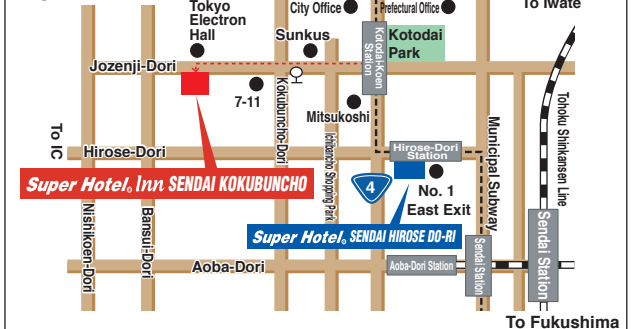


Photo courtesy of Tourist Exchange Division, Sendai City Government

During this event, 160 zelkova trees along Jozenji-Dori are illuminated. Visitors are welcome to enjoy a variety of events, including a parade.

● Directly in front of hotel
 For inquiries: +81 22-261-6515

HOTEL MAP



Check-in: 15:00–24:00, Check-out: 10:00

Super Hotel® Inn SENDAI KOKUBUNCHO



022-722-9000

2-14-23 Kokubu-cho, Aoba-ku, Sendai-shi, Miyagi 980-0803

For a healthy planet and healthy people

FAX : 022-722-9001

Mobile reservations also accepted!



Smartphone reservations also accepted!

