



# Super Hotel® SENDAI HIROSE DO-RI

SUPER HOTEL SENDAI HIROSE DO-RI

URL : <http://www.superhotel.co.jp>  
mobile : <http://www.sh-mb.com/>

Natural hot  
springs

Gengetsu-no-yu

Free  
healthy  
breakfast

Free  
natural hot  
springs

Located in the lush City of Trees.  
Conveniently located about 8 minutes  
by foot from JR Sendai Station.  
Ideal for both business and leisure!



Photo courtesy of Tourist Exchange Division, Sendai City Government

## Gengetsu-no-yu natural hot spring

Free



(May not appear exactly as shown)

- **Bathing Times** : [Women] 18:00–20:45, 7:00–9:45 next morning (Monday through Friday)  
15:00–21:45, 7:00–9:50 next morning (Saturday, Sundays & holidays)  
[Men] 15:00–17:45, 21:00–6:45 next morning (Monday through Friday)  
22:00–6:45 next morning (Saturday, Sundays & holidays)
- **Spring quality** : Alkaline hypotonic high-temperature spring, with heating and circulation filtration.

## Healthy Breakfast

Free

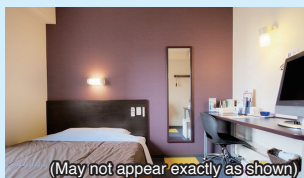


(May not appear exactly as shown)

We provide a nutritionally balanced and healthy breakfast for all guests. Start your day out right with a delicious boost.

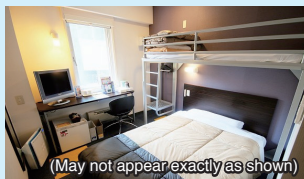
■ **Service time** : 6:45–9:00

### Guest Rooms



(May not appear exactly as shown)

Single room  
(up to 2 guests)  
● Wide bed  
...150 cm



(May not appear exactly as shown)

Super room  
(up to 3 guests)  
● Wide bed  
...150 cm wide  
+ loft bed

### Standard Amenities and Facilities in Every Guest Room

#### [Room Facilities]

- 26-inch widescreen LCD TV ● Movies on demand (VOD)
- Complimentary Internet (LAN) ● Wi-Fi available building-wide
- Individual room A/C unit ● Refrigerator ● Air purifier with humidifier
- Unit bathroom ● Bidet ● Hair dryer ● Electric Kettle

#### [Loanable Items, Other Items] (first come, first served)

- Choice of 7 types of pillows ● Blankets ● Thermometer
- Light stand ● Trouser press ● Iron ● Sewing set
- Can opener ● Wine-bottle opener ● Nail clippers
- Rental PC (1000 yen per day) ● Copy service (fees apply)
- Fax service (fees apply)

#### [Amenities]

- Toothbrush ● Bath towel ● Clothes basket
- Face towel ● Two-in-one shampoo
- Body soap
- Pajamas (available on the 1st floor)

#### [Hotel Facilities]

- Hot spring bath (alternating system)
- Coin-operated laundry \*Free detergent  
(Clothes washer: 100 yen per use,  
Clothes dryer: 100 yen per 30 minutes)
- Vending machines (soft drinks, alcoholic beverages, cigarettes)
- Computer corner (printer available)

### Sendai Tanabata Festival



Photo courtesy of Tourist Exchange Division, Sendai City Government

This is one of Sendai's major summer events. The gorgeous bamboo decorations are a highlight of the festival, and the "Sendai Tanabata Fireworks" event held on the festival's eve shouldn't be missed.

For inquiries: +81 22-265-8185

● Approx. 8-minute walk from the West Gate of JR Sendai Station

● Approx. 1-minute walk from the No. 1 East Exit of Hirose-Dori Station on the Sendai Subway ● Approx. 40-minute drive from Sendai Airport

### Aoba Castle



Photo courtesy of Tourist Exchange Division, Sendai City Government

Also known as Sendai Castle, this structure was built by Masamune Date. Aoba Castle Park is often full of visitors come to see the cherry blossoms or the statue of Masamune Date on his horse.

\* Approx. 10-minute drive from hotel  
For inquiries: +81 22-214-8259

### Matsushima

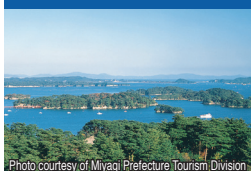
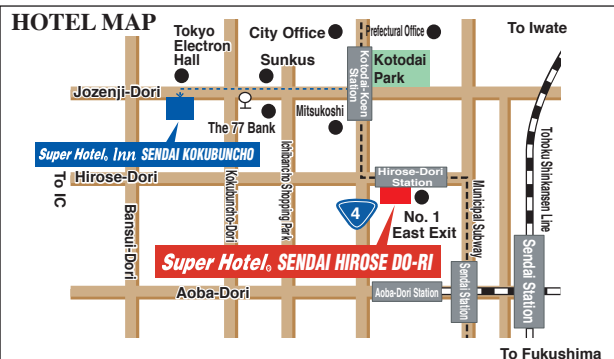


Photo courtesy of Miyagi Prefecture Tourism Division

Matsushima is counted as one of the "Three Views of Japan."

With more than 260 islands, the best way to experience the wondrous scenery is with a sightseeing boat.

\* Approx. 30-minute drive from hotel  
For inquiries: +81 22-354-2618



Check-in: 15:00–24:00, Check-out: 10:00

Super Hotel® SENDAI HIROSE DO-RI



For a healthy planet  
and healthy people

2-9-23 Chuo, Aoba-ku, Sendai-shi, Miyagi 980-0021

022-224-9000

FAX : 022-224-9001

Mobile  
reservations  
also accepted!

