



# Super Hotel® OYAMA

SUPER HOTEL OYAMA

URL : <http://www.superhotel.co.jp>  
 mobile : <http://www.sh-mb.com/>



Natural hot springs

Izuru-no-yu

Oyama, located in the south of Tochigi, is the prefecture's second-largest city and transportation hub. The natural hot spring Izuru-no-yu offers the perfect place to recover from work or a long trip.

Free healthy breakfast

Free natural hot springs

## Izuru-no-yu natural hot spring

Free



(May not appear exactly as shown)

- Bathing Times : [Men] 18:00–20:50, 23:00–6:50 next morning  
 [Women] 15:00–17:50, 21:00–22:50, 7:00–9:50 next morning
- Spring quality : Simple alkaline hot spring (Alkaline hypotonic high-temperature spring), with heating and circulation filtration

## Healthy Breakfast

Free



(May not appear exactly as shown)

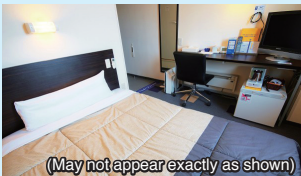
Super Hotel salads are safe and healthy.



Made with only organic JAS vegetables.

- We provide a nutritionally balanced and healthy breakfast for all guests.
- Service time : 6:30–8:30 (Monday through Saturday),  
 6:30–9:00 (Sundays & holidays)

### Guest Rooms



(May not appear exactly as shown)

Single room  
 12 m<sup>2</sup>  
 ● Wide bed ...150 cm  
 (some beds 140 cm)



(May not appear exactly as shown)

Super room  
 12 m<sup>2</sup>  
 ● Wide bed ...150 cm  
 + loft bed

### Standard Amenities and Facilities in Every Guest Room

#### [Room Facilities]

- 32-inch widescreen LCD TV ● Movies on demand (VOD, 120 titles)
- Complimentary high-speed Internet (LAN)
- Complimentary Wi-Fi
- Refrigerator ● Air purifier with humidifier
- Unit bathroom ● Bidet



#### [Amenities]

- Toothbrush ● Bath towel
- Face towel
- Two-in-one shampoo
- Body soap
- Pajamas

#### [Loanable Items, Other Items]

- Choice of 7 types of pillows ● Blankets ● Thermometer
- Light stand ● Trouser press ● Iron ● Sewing set
- Can opener ● Wine-bottle opener ● Nail clippers
- Mobile charger ● Rental PC (1000 yen per day)
- Copy service (fees apply) ● Fax service (fees apply)

#### [Hotel Facilities]

- Coin-operated laundry \*Free detergent (Clothes washer: 100 yen per use, Clothes dryer: 100 yen per 30 minutes)
- Vending machines (soft drinks, alcoholic beverages, cigarettes)
- Computer corner (printer available)

### Fireworks



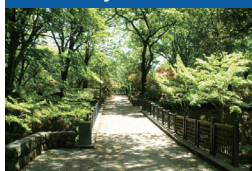
Held at the assembly grounds near the clear waters of Oyama's Omogawa, this event is one of the largest in the Kanto region. The attraction features nearly 20,000 rounds, including a continuous volley of "Shakutamas" as well as "Wide Stamines" and "Niagara Falls" fireworks launched from a location very close to the stands. 8-minute walk from the West Gate of JR Oyama Station

### Cherry Blossom Festival at Koyama Gion Castle

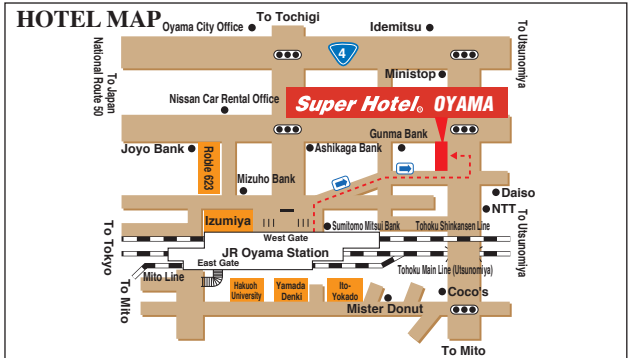


A variety of attractions can be found in the Koyama palace square and the city office parking lot, from food stands to stage events and fluffy play equipment for children. 8-minute drive from JR Oyama Station

### Shiroyama Park



Shiroyama Park retains the layout of Sano Castle, deserted in 1614. Covering a total of about 41,000 square meters, the park includes four peaks: Maeyama, Nakayama, Honmaru, and Okuyama. 10-minute straight walk west from Super Hotel Oyama



■ Parking: 45 spaces (first come, first served), Free; Hours: 15:00–10:00 following day  
 When the parking lot is full, please use a nearby coin-operated lot.  
 Max. 800 yen for 24 hours (Price to be borne by customer)

- Aprox. 5-minute walk from the West Gate of JR Oyama Station
- Aprox. 30-minute drive from Sano Fujioka IC on the Tohoku Expressway

Check-in: 15:00–24:00 Check-out: 10:00

**Super Hotel® OYAMA**

3-16-10 Shiroyama-cho, Oyama-shi, Tochigi 323-0025



0285-24-9000

FAX : 0285-24-9008

Mobile reservations also accepted!

