



Super Hotel® NIIGATA

SUPER HOTEL NIIGATA

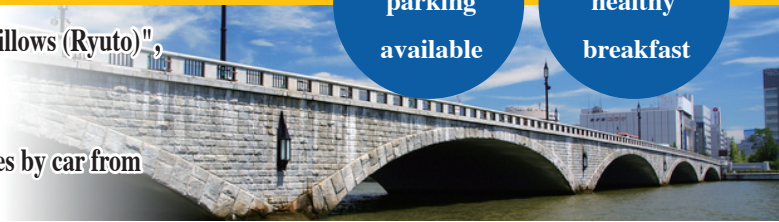
URL : <http://www.superhotel.co.jp>
 mobile : <http://www.sh-mb.com/>



Paid parking available

Free healthy breakfast

Niigata, sometimes called the "City of Water" or the "City of Willows (Ryuto)", is the largest city on the Japan Sea side of Honshu. The hotel is conveniently located just 8 minutes by foot from the Bandai Gate of JR Niigata Station and about 10 minutes by car from Shichikuyama IC toward the north gate of Niigata station.



Guest Rooms

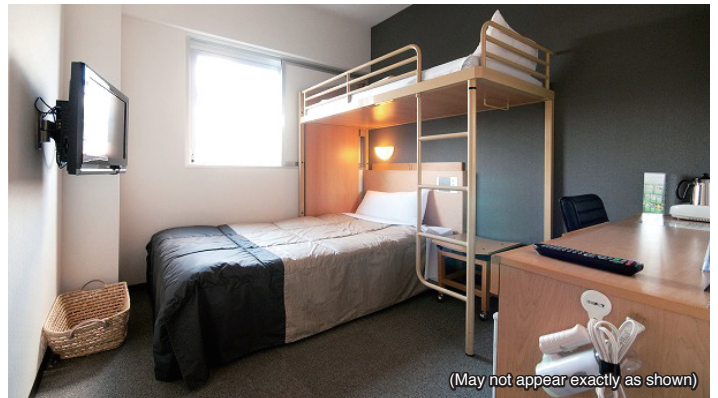
Single room



(May not appear exactly as shown)

●Wide bed (140 cm wide)

Super room



(May not appear exactly as shown)

●Wide bed (140 cm wide) + loft bed

Healthy Breakfast

Free



(May not appear exactly as shown)

Super Hotel salads are safe and healthy.

Made with only organic JAS vegetables.



We provide a nutritionally balanced and healthy breakfast for all guests.

■Service time: 6:30-8:30 (Monday through Saturday), 6:30-9:00 (Sundays & holidays)

Standard Amenities and Facilities in Every Guest Room

[Room Facilities]

- 26-inch widescreen LCD TV
- Complimentary high-speed Internet (LAN), Wi-Fi available in all rooms
- Refrigerator
- Bidet
- Electric kettle
- Movies on demand (VOD, 150 titles)
- Air purifier with humidifier
- Unit bathroom
- Hair dryer
- Alarm clock
- Mobile charger



[Loanable Items, Other Items]

- Choice of 7 types of pillows
- Light stand
- Can opener
- Rental PC (1000 yen per day)
- Copy service (fees apply)
- Blankets
- Trousers press
- Wine-bottle opener
- Mobile charger
- Thermometer
- Iron
- Nail clippers
- Sewing set
- Fax service (fees apply)

[Amenities]

- Toothbrush
- Face towel
- Two-in-one shampoo
- Body soap
- Pajamas
- Bath towel

[Hotel Facilities]

- Coin-operated laundry *Free detergent (Clothes washer: 100 yen per use, Clothes dryer: 100 yen per 30 minutes)
- Vending machines (soft drinks, alcoholic beverages, cigarettes)
- Computer corner (printer available)

Toki Messe



An exceptionally eye-catching waterfront complex of convention facilities, this large-scale convention center boasts such sites as the hotel's "Niigata Bandajima Art Museum" and an observation room in the top floor of the high-rise. The view from the top floor especially boasts a most compelling view of Niigata. Visitors can enjoy an outstanding 360-degree view that includes the Sea of Japan, Sado Island, and the Gozu mountain range.

Sado



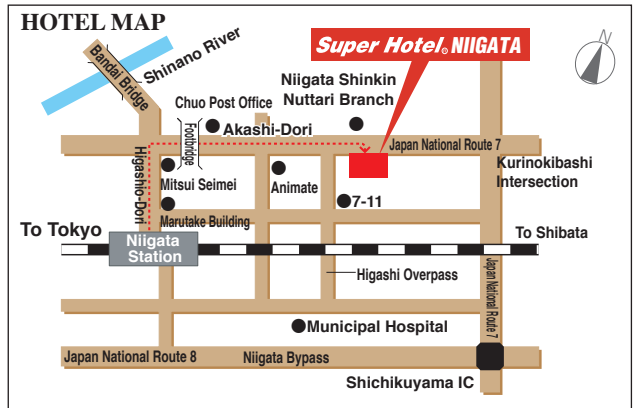
Sado, home to the Japanese crested ibis, offers a beautiful sea and delicious seafood. Visitors can also enjoy a comfortable ride on a hydrofoil. This is a popular location for daytrips!

Fireworks



This fireworks display marks the climax of the Niigata Festival. Join tens of thousands of revelers enjoying the show on the banks of the Shinano River as fireworks soar into the summer's night sky. Among the many explosions, "Evolution," with 8 big "Starmine" fireworks launched at once, is by far the highlight of the show. Both banks of the Shinano River offer a relaxing view of the show.

- Approx. 8-minute walk from the Bandai Gate of Niigata Station on the JR Echigo Line, Shinetsu Main Line, Hakushin Line, Ban'etsu West Line, and Joetsu Shinkansen Line
- Approx. 10-minute drive from Shichikuyama IC toward the Niigata Station's North Gate



■Parking: 36 spaces (first come, first served), 800 yen per night (tax included) 15:00-10:00 following day, Vehicle height restriction: 2.1 m

Check-in: 15:00-24:00, Check-out: 10:00

Super Hotel® NIIGATA

1-6-13 Akashi, Chuo-ku, Niigata-shi, Niigata 950-0084



025-247-9000

FAX : 025-247-9700

Mobile reservations also accepted!

